



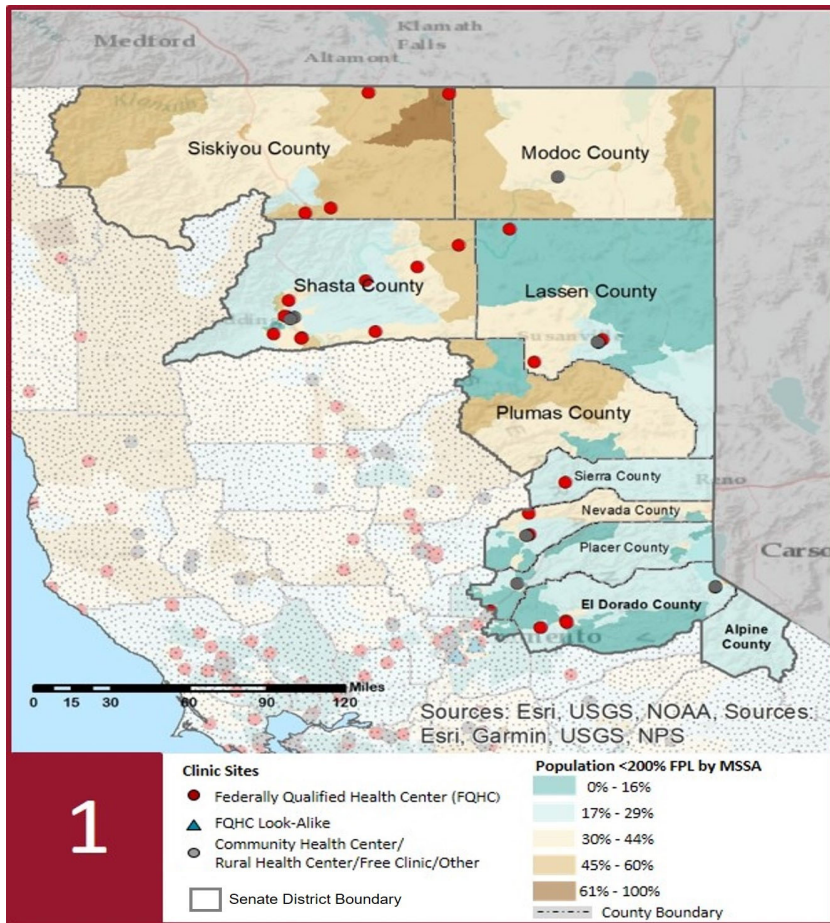
2022 Profile of Community Health Centers Senate District 1

Senator Brian Dahle



The Clinics

Community Health Centers (CHCs) are nonprofit health care practices located in low income and medically underserved areas. CHCs share a common mission to serve everyone who walks through their doors, regardless of their ability to pay. The term CHC include Federally Qualified Health Centers (FQHC), FQHC Look-Alikes, Migrant Health Centers, Rural and Frontier Health Centers, and Free Clinics. CHCs are an essential segment of the safety net. In many California Counties, they provide a significant proportion of comprehensive primary care services to those who are publicly subsidized or uninsured.



Clinic Types

Total Number of CHCs	34
Federally Qualified Health Center Sites (FQHC)	25
FQHC Look-Alike Sites	0
Other (Free/Tribal/Non-FQs)	9
Rural Health Center Sites (95-210 RHC)	1

Demographics

Patients	154,432	
Male	66,689	43%
Female	87,743	57%
19 Years & Under	42,687	28%
Encounters	545,555	

Poverty Level

Under 100%	36,730	24%
100 - 138%	11,176	7%
139 - 200%	11,542	7%
201 - 400%	6,139	4%
Over 400%	1,164	1%
Unknown	87,681	57%

Age

Less than 1 Year	3,667	2%
1 - 4 Years	8,805	6%
5 - 12 Years	16,319	11%
13 - 14 Years	4,113	3%
15 - 19 Years	9,783	6%
20 - 34 Years	28,298	18%
35 - 44 Years	18,078	12%
45 - 64 Years	40,176	26%
More than 65 Years	25,193	16%

Race

White	126,283	82%
Black	2,473	2%
Native American	7,168	5%
Asian/Pacific Islander	3,647	2%
More than one Race	2,736	2%
Other/ Unknown	12,125	8%

Ethnicity

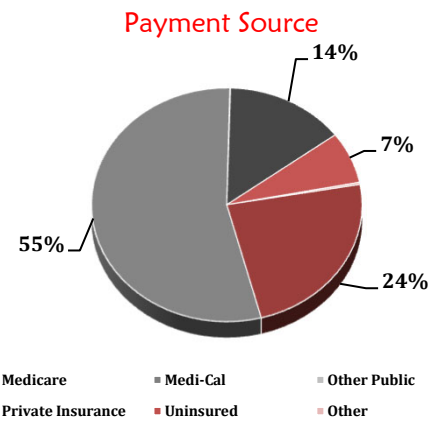
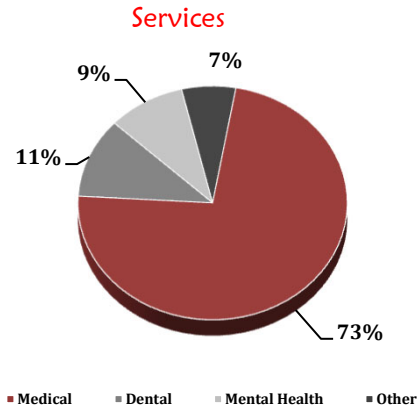
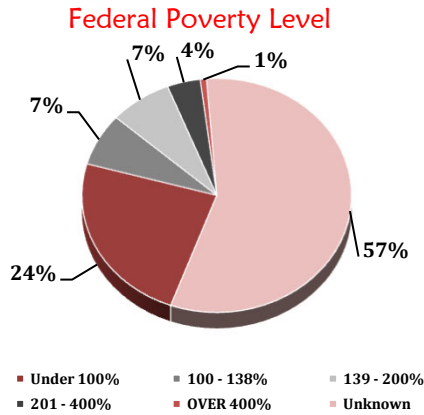
Hispanic	19,502	13%
Non-Hispanic	126,883	82%
Unknown	8,047	5%

Language

Primary Language Not English	5%
------------------------------	----

2022 Profile of Community Health Centers Senate District 1

Senator Brian Dahle



Services	Provider FTEs	Encounters
Medical*	181.4 67%	398,996 73%
Dental**	36.4 13%	60,278 11%
Mental Health***	35.9 13%	50,855 9%
Other****	17.4 6%	35,426 6%

% of CHCs providing other significant services

Vision Services	24%
Basic Lab Services	38%
Radiology Services	3%
Pharmacy Services	15%
Urgent Care Services	21%
Substance Abuse Services	44%
Women's Health Services	65%

*Physicians; Physician Assistants; Family Nurse Practitioners; Certified Nurse Midwives and Visiting Nurses.
 **Psychiatrists; Clinical Psychologists; Licensed Clinical Social Workers.
 ****Other providers billable to Medi-Cal.

Revenue and Utilization by Payment Source

Program	Patients**	Encounters
Medicare	30,098 19%	123,184 23%
Medi-Cal	72,170 47%	283,396 52%
Other Public	148 0%	356 0%
Private Insurance	27,655 18%	74,693 14%
Uninsured Services	21,922 14%	37,021 7%
Covered California	1,668 1%	4,943 1%
PACE	- 0%	- 0%
Other	771 0%	1,608 0%
BCCCP**	265 0%	502 0%
CHDP**	9,372 6%	15,613 3%
Family PACT**	3,335 2%	4,239 1%

Gross Patient Revenue (charged)

\$159,648,354

Net Patient Revenue (collected)

\$104,407,776

Other Operating Revenue

Federal Funds	\$ 45,449,258
State Funds	\$ 1,538,474
County/Local Funds	\$ 5,402,344
Private	\$ 4,450,921
Donations/Contributions	\$ 596,534
Other	\$ 19,970,015

TOTAL OPERATING REVENUE

\$181,815,322

**Patient counts for Episodic programs (BCCCP, CHDP, Family PACT and Other Episodic Programs) are duplicated. Episodic Programs include Breast Cancer Programs such as the Breast Cancer Early Detection Program (BCCCP) and the Breast and Cervical Cancer Control Program (BCCCP); CHDP = Child Health and Disability Prevention Program; Family PACT = Family Planning Access Care and Treatment Program and other payers covered by a grant.

Because of their philosophy and by necessity, CCHCs have been vigilant about controlling the cost of care, and the untoward effects of deferred or neglected care, by promoting a broad range of preventive health services specifically targeted to the particular needs of their communities and patient populations. The Federal Office of Management and Budget has found the Health Center Program to be one of the ten most effective federal programs and the most effective program under the federal Health and Human Services Agency. Despite enormous challenges, CCHCs have persisted in their mission to serve their local communities.

Profile created by CPCA Data Team. Data Source is 2020 HCAI Annual Utilization Report of Community Health Centers.