



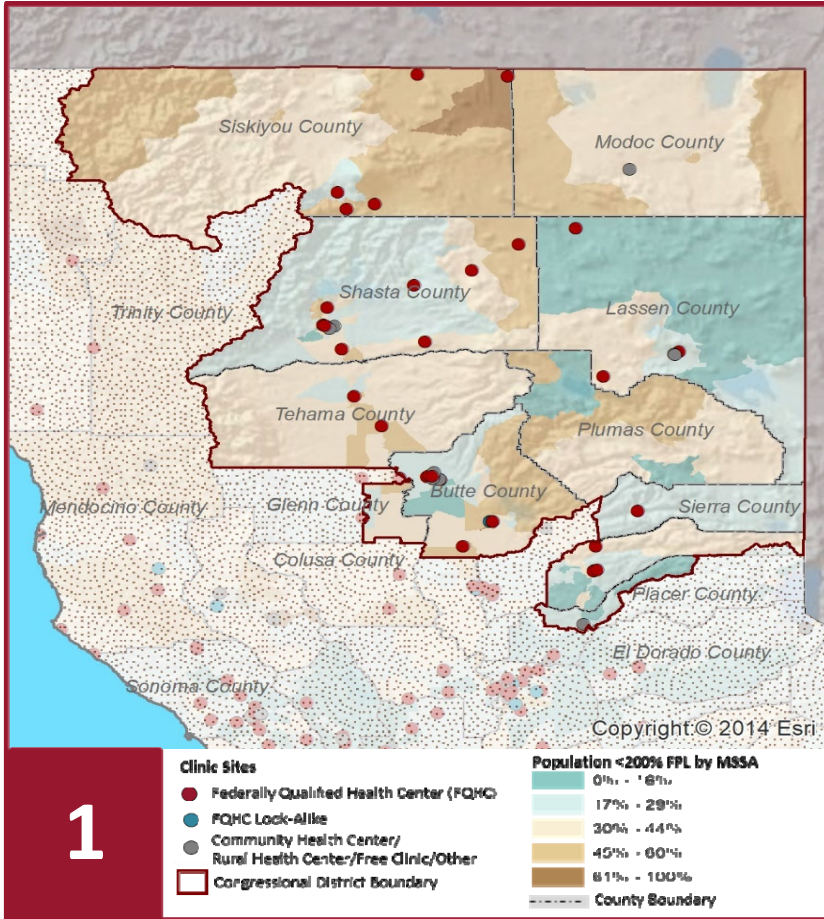
2022 Profile of Community Health Centers Congressional District 1

Representative Doug LaMalfa



The Clinics

Community Health Centers (CHCs) are nonprofit health care practices located in low income and medically underserved areas. CHCs share a common mission to serve everyone who walks through their doors, regardless of their ability to pay. The term CHC include Federally Qualified Health Centers (FQHC), FQHC Look-Alikes, Migrant Health Centers, Rural and Frontier Health Centers, and Free Clinics. CHCs are an essential segment of the safety net. In many California Counties, they provide a significant proportion of comprehensive primary care services to those who are publicly subsidized or uninsured.



Clinic Types

Total Number of CHCs	44
FQHC Sites	32
FQHC Look-Alike Sites	2
Rural Health Center Sites (95-210 RHC)	2

Demographics

Patients	204,866	
Male	90,687	44%
Female	114,179	56%
19 Yrs & Under	60,659	30%
Encounters	707,181	

Poverty Level

Under 100%	65,440	32%
100 - 138%	17,292	8%
139 - 200%	17,749	9%
201 - 400%	10,522	5%
Over 400%	2,275	1%
Unknown	91,588	45%

Age

Under 1 Year	4,961	2%
1 - 4 Years	12,379	6%
5 - 12 Years	23,073	11%
13 - 14 Years	5,565	3%
15 - 19 Years	14,681	7%
20 - 34 Years	46,815	23%
35 - 44 Years	24,070	12%
45 - 64 Years	47,231	23%
Over 65 Years	26,091	13%

Race

White (non-hispanic)	153,293	75%
Black	4,350	2%
Native American	14,287	7%
Asian/Pacific Islander	6,120	3%
More than one Race	3,788	2%
Other/ Unknown	23,028	11%

Ethnicity

Hispanic	35,273	17%
Non-Hispanic	159,835	78%
Unknown	9,758	5%
AG/Migratory Workers		
Patients	9,406	5%
Encounters	23,000	3%

Language

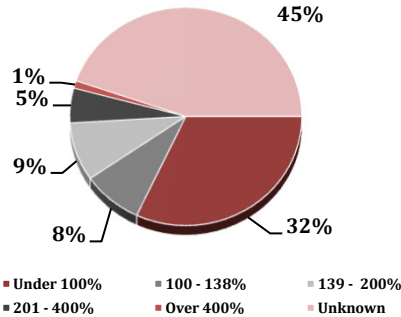
Primary Language Not English	6%
------------------------------	----

2022 Profile of Community Health Centers Congressional District 1

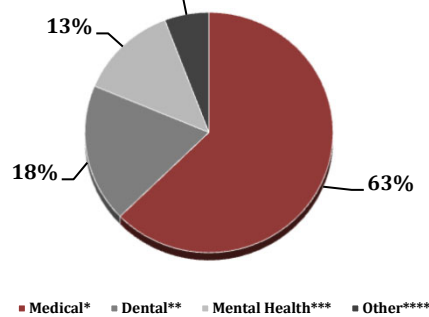
Representative Doug LaMalfa



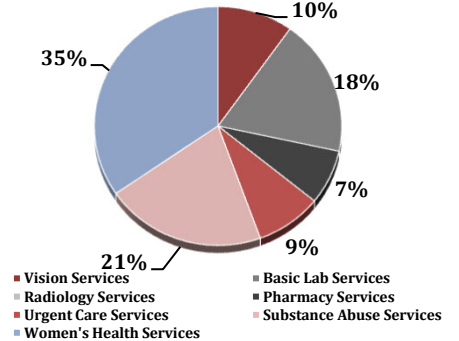
Federal Poverty Level



Services



Payment Source



Services	Provider FTEs	Encounters
Medical*	197.65	526,131
Dental**	58.71	89,802
Mental Health***	40.69	51,156
Other****	18.26	40,092

% of CHCs providing other significant services

Vision Services	18%
Basic Lab Services	34%
Radiology Services	0%
Pharmacy Services	14%
Urgent Care Services	16%
Substance Abuse Services	39%
Women's Health Services	64%

*Physicians; Physician Assistants; Family Nurse Practitioners; Certified Nurse Midwives and Visiting Nurses. ***Psychiatrists; Clinical Psychologists; Licensed Clinical Social Workers. ****Other providers billable to Medi-Cal and other CPSP providers not listed.

Revenue and Utilization by Payment Source

Program	Patients**	Encounters
Medicare	30,458	124,563
Medi-Cal	102,603	400,006
Other Public	8	22
Private Insurance	37,380	95,080
Uninsured Services	31,183	45,966
Covered California	1,309	4,768
PACE	-	0
Other	1,925	8,526
BCCCP**	221	124,563
CHDP**	9,252	15,445
Family PACT**	7,620	12,176

Gross Patient Revenue (charged)

\$218,045,628

Net Patient Revenue (collected)

\$157,271,775

Other Operating Revenue

Federal Funds	\$ 61,717,570
State Funds	\$ 2,475,213
County/Local Funds	\$ 5,752,617
Private	\$ 4,213,095
Donations/Contributions	\$ 881,561
Other	\$ 19,889,161

TOTAL OPERATING REVENUE

\$94,929,217

**Patient counts for Episodic programs (BCCCP, CHDP, Family PACT and Other Episodic Programs) are duplicated. Episodic Programs include Breast Cancer Programs such as the Breast Cancer Early Detection Program (BCCCP) and the Breast and Cervical Cancer Control Program (BCCCP); CHDP = Child Health and Disability Prevention Program; Family PACT = Family Planning Access Care and Treatment Program and other payers covered by a grant.

Because of their philosophy and by necessity, CCHCs have been vigilant about controlling the cost of care, and the untoward effects of deferred or neglected care, by promoting a broad range of preventive health services specifically targeted to the particular needs of their communities and patient populations. The Federal Office of Management and Budget has found the Health Center Program to be one of the ten most effective federal programs and the most effective program under the federal Health and Human Services Agency. Despite enormous challenges, CCHCs have persisted in their mission to serve their local communities.

Data Source is California Department of Health Care Access and Information (HCAI) 2020 Annual Utilization Report (AUR). Report prepared by the CPCA Data Team.