

CALIFORNIA COMMUNITY CLINICS AND HEALTH CENTERS

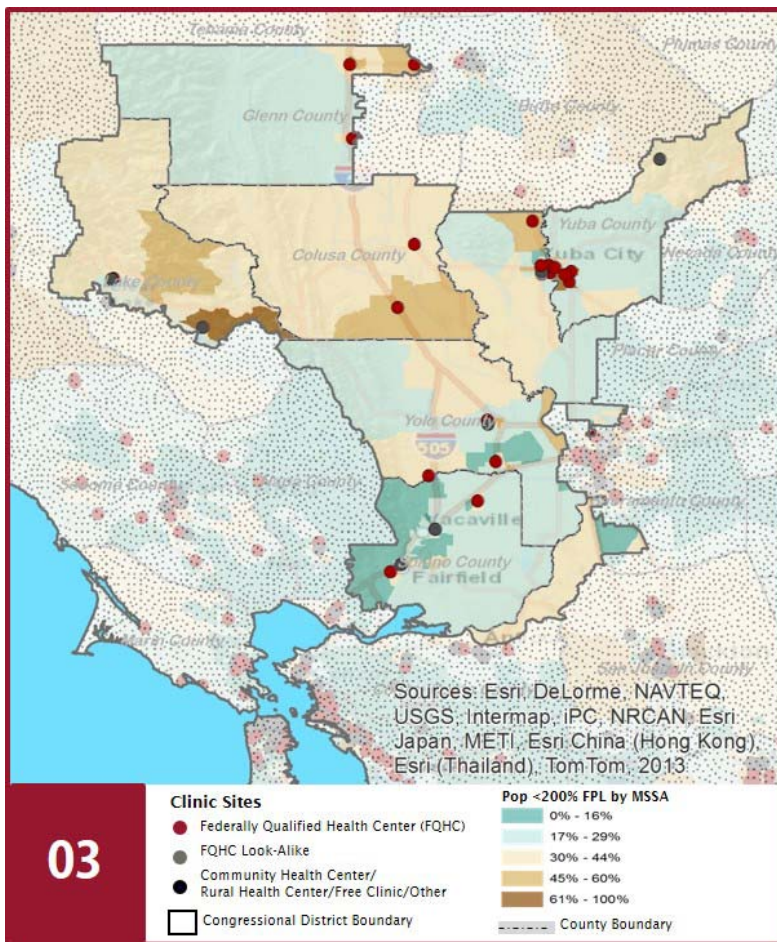
2018

Congressional District 3
Representative John Garamendi



The Clinics

Community Clinics and Health Centers (CCHCs) are nonprofit health care practices located in low income and medically underserved areas. CCHCs share a common mission to serve everyone who walks through their doors, regardless of their ability to pay. The term CCHC include Federally Qualified Health Centers (FQHC), FQHC Look-Alikes, Migrant Health Centers, Rural and Frontier Health Centers, and Free Clinics. CCHCs are an essential segment of the safety net. In many California Counties, they provide a significant proportion of comprehensive primary care services to those who are publicly subsidized or uninsured.



Clinic Types

Total Number of CCHCs	30
Federally Qualified Health Center sites	22
Federally Qualified Health Center Look-Alike sites	1
95-210 Rural Health Center sites	2

Demographics

Patients	156,269	
Female	94,751	61%
Male	61,518	39%
19 Years & under	55,163	35%
Encounters	525,771	

Poverty Levels

Under 100%	75,533	48%
100 - 138%	16,310	10%
139 - 200%	12,765	8%
201 - 400%	6,314	4%
Over 400%	1,108	1%
Unknown	44,239	28%

03

Race

White (including Hispanic)	107,272	69%
Black	5,717	4%
Native American	4,777	3%
Asian/ Pacific Islander	14,568	9%
More Than One Race	3,798	2%
Other/ Unknown	20,137	13%

Ethnicity

Hispanic	66,261	42%
Non-Hispanic	84,182	54%
Unknown	5,826	4%

Age

Less than 1 Year	4,845	3%
1 - 4 Years	11,570	7%
5 - 12 Years	21,506	14%
13 - 14 Years	4,526	3%
15 - 19 Years	12,716	8%
20 - 34 Years	38,752	25%
35 - 44 Years	18,207	12%
45 - 64 Years	32,364	21%
Over 65 Years	11,783	8%

Language

Primary Language Not English	27%
------------------------------	-----

Migratory Workers

Patients	19,847	13%
Encounters	77,257	15%

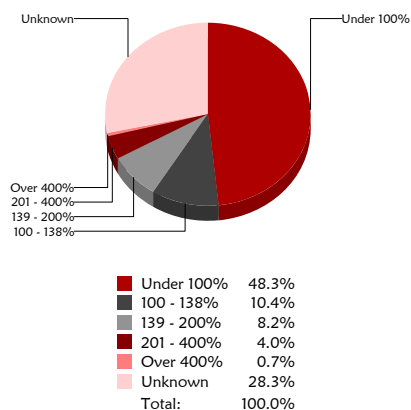
CALIFORNIA COMMUNITY CLINICS AND HEALTH CENTERS

2018

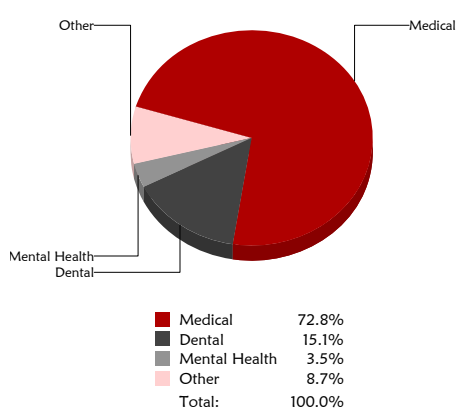
Congressional District 3
Representative John Garamendi



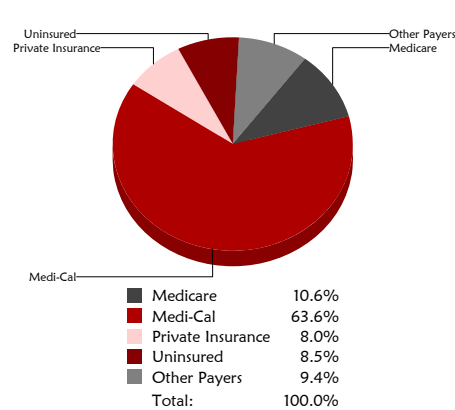
Federal Poverty Level
Patients



Services
Visits



Payment Source
Visits



The Services

	Provider FTEs		Encounters	
Medical *	109.6	57%	382,801	73%
Dental **	27.5	14%	79,240	15%
Mental Health ***	15.8	8%	18,174	3%
Other****	39.1	20%	45,556	9%

% of Health Centers providing other significant services

Vision Services	7%
Basic Lab Services	40%
Radiology Services	3%
Pharmacy Services	13%
Urgent Care Services	17%
Substance Abuse Services	23%
Womens Health Services	43%

*Physicians, physician assistants, family nurse practitioners, certified nurse midwives, visiting nurses.
Dentists and Registered Dental Hygienists, *Psychiatrists, clinical psychologists, and licensed clinical social workers.
****Other providers billable to Medi-Cal

Revenue and Utilization by Payment Source

Program	Patients ^ ^		Encounters	
Medicare	13,333	9%	55,779	11%
Medi-Cal	93,375	60%	334,559	64%
All County*	0	0%	12,340	2%
Private Insurance	15,477	10%	41,820	8%
Uninsured Services**	28,675	18%	44,444	8%
Covered California	968	1%	2,663	1%
PACE	0	0%	0	0%
Other	4,441	3%	6,208	1%
BCCCCP**	374	0%	923	0%
CHDP**	2,911	2%	8,945	2%
FamilyPACT**	6,886	4%	18,090	3%

Patient Revenue	
Gross Patient Revenue (charged)	\$121,092,644
Net Patient Revenue (collected)	\$74,068,278

Other Operating Revenue	
Federal	\$16,050,891
State	\$204,138
County/Local	\$1,719,401
Private	\$804,486
Donations/Contributions	\$574,295
Other	\$4,863,616

Total Operating Revenue

\$ 98,285,105

* County Indigent/CMSP/MISP, LA County Public/Private Partnership, and Other County Programs.

**Free and Self-Pay/ Sliding Fee Programs.

*** Patient counts for Episodic programs are duplicated (BCCCCP = Breast and Cervical Cancer Control Program; CHDP = Child Health and Disability Prevention Program; Family PACT = Family Planning Access Care and Treatment program).

Because of their philosophy and by necessity, CCHCs have been vigilant about controlling the cost of care, and the untoward effects of deferred or neglected care, by promoting a broad range of preventive health services specifically targeted to the particular needs of their communities and patient populations. The federal Office of Management and Budget has found the Health Center Program to be one of the ten most effective federal programs and the most effective program under the federal Health and Human Services Agency. Despite enormous challenges, CCHCs have persisted in their mission to serve their local communities.

All information compiled by Jeanita Harris, Sr. Data Analyst, CPCA. Numbers are based on 2016 OSHPD data.