

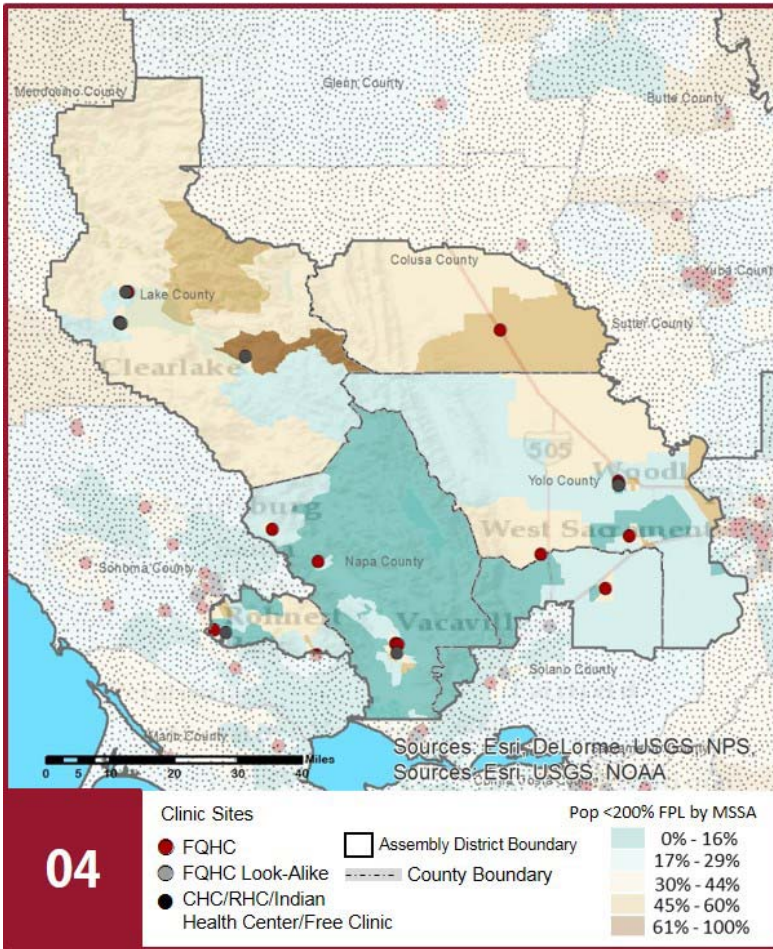
CALIFORNIA COMMUNITY HEALTH CENTERS

2018 | Assembly District 4 Assemblymember Cecilia Aguiar-Curry



The Clinics

Community Clinics and Health Centers (CCHCs) are nonprofit health care practices located in low income and medically underserved areas. CCHCs share a common mission to serve everyone who walks through their doors, regardless of their ability to pay. The term CCHC include Federally Qualified Health Centers (FQHC), FQHC Look-Alikes, Migrant Health Centers, Rural and Frontier Health Centers, and Free Clinics. CCHCs are an essential segment of the safety net. In many California Counties, they provide a significant proportion of comprehensive primary care services to those who are publicly subsidized or uninsured.



Clinic Types

Total Number of CCHCs	19
Federally Qualified Health Center sites	12
Federally Qualified Health Center Look-Alike sites	0
95-210 Rural Health Center sites	1

The Patients

Demographics

Patients	94,273	
Female	56,787	60%
Male	37,486	40%
19 Years & Under	33,186	35%
Encounters	338,888	

Poverty Levels

Under 100%	43,368	46%
100-138%	10,313	11%
139-200%	7,422	8%
201-400%	3,342	4%
Above 400%	1,178	1%
Unknown	28,650	30%

Race

White (including Hispanic)	60,060	64%
Black	1,902	2%
Native American	5,316	6%
Asian/ Pacific Islander	3,619	4%
More Than One Race	1,652	2%
Other/ Unknown	21,724	23%

Ethnicity

Hispanic	47,784	51%
Non-Hispanic	37,923	40%
Unknown	8,566	9%

Age

Less than 1 Year	2,734	3%
1 - 4 Years	7,508	8%
5 - 12 Years	12,742	14%
13 - 14 Years	2,722	3%
15 - 19 Years	7,480	8%
20 - 34 Years	22,355	24%
35 - 44 Years	11,517	12%
45 - 64 Years	19,752	21%
Over 65 Years	7,463	8%

Migratory Workers

Patients	8,779	9%
Encounters	37,699	11%

Language

Primary Language Not English	32%
------------------------------	-----

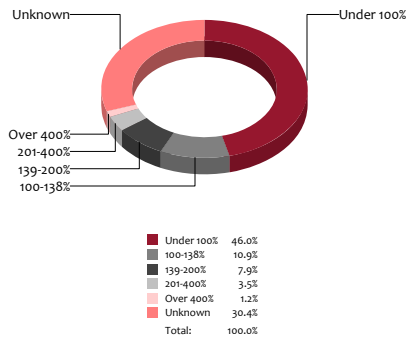
CALIFORNIA COMMUNITY HEALTH CENTERS

2018 | Assembly District 4 Assemblymember Cecilia Aguiar-Curry



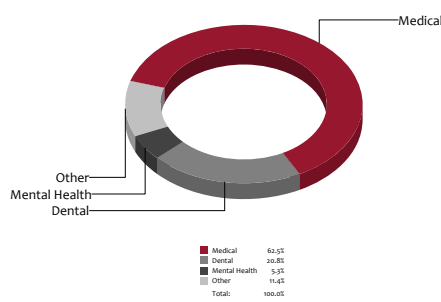
Poverty Level

Patients



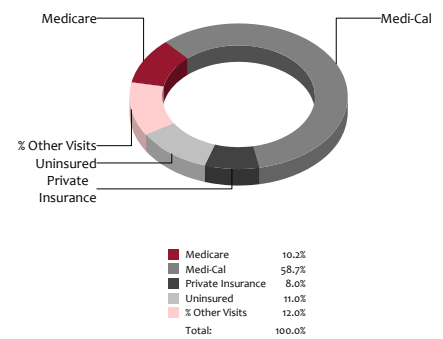
Services

Visits



Payment Source

Visits



The Services

	Provider FTEs		Encounters	
Medical*	76.3	47%	211,727	62%
Dental*	24.5	15%	70,323	21%
Mental Health ***	16.9	10%	18,051	5%
Other***	43.9	27%	38,787	11%
Total	162		338,888	

Health Centers providing other significant services

Vision Services	1	5%
Basic Lab Services	10	53%
Radiology Services	0	0%
Pharmacy Services	5	26%
Urgent Care Services	6	32%
Substance Abuse Services	7	37%
Womens Health Services	14	74%

*Physicians, physician assistants, family nurse practitioners, certified nurse midwives, visiting nurses. **Dentists and Registered Dental Hygienists
Psychiatrists, clinical psychologists, and licensed clinical social workers. *Other providers billable to Medi-Cal

Revenue and Utilization by Payment Source

Program	Patients ^ ^		Encounters		Revenue	
	Count	%	Count	%	Count	%
Medicare	7,791	8%	34,567	10%	Gross Patient Revenue	\$90,698,333
Medi-Cal	46,329	49%	198,946	59%	Net Patient Revenue	\$52,464,002
Private Insurance	13,917	15%	27,277	8%	Other Operating Revenue	
Uninsured Services ^ ^ ^ ^	22,606	24%	37,385	11%	Federal	\$12,960,631
All County ^ ^ ^	3	0%	12,324	4%	State	\$136,743
Covered California	1,121	1%	3,277	1%	County/Local	\$2,288,988
PACE Patients	0	0%	0	0%	Private	\$3,036,944
Other	2,506	3%	4,327	1%	Donations/Contributions	\$1,217,831
BCCCP ^ ^	750	1%	1,300	0%	Other	\$6,306,786
CHDP ^ ^	3,466	4%	7,959	2%	Total Operating Revenue	
Family PACT ^ ^	6,208	7%	11,526	3%	\$ 78,411,925	

^ ^ Patient counts for Episodic programs (BCCP, CHDP, Family PACT) are duplicated. BCCCP = Breast and Cervical Cancer Control Program; CHDP = Child Health and Disability Prevention Program;
Family PACT = Family Planning Access Care and Treatment program.
^ ^ ^ County Indigent/CMSP/MISP, San Diego County Medical Plan, LA County Public/Private Partnership, and Other County Programs.
^ ^ ^ ^ Free and Self-Pay/ Sliding Fee Programs.

Because of their philosophy and by necessity, CCHCs have been vigilant about controlling the cost of care, and the untoward effects of deferred or neglected care, by promoting a broad range of preventive health services specifically targeted to the particular needs of their communities and patient populations. The federal Office of Management and Budget has found the Health Center Program to be one of the ten most effective federal programs and the most effective program under the federal Health and Human Services Agency. Despite enormous challenges, CCHCs have persisted in their mission to serve their local communities.

All information compiled by Jeanita Harris, Sr. Data Analyst, CPCA. Numbers are based on 2016 OSHPD data.