

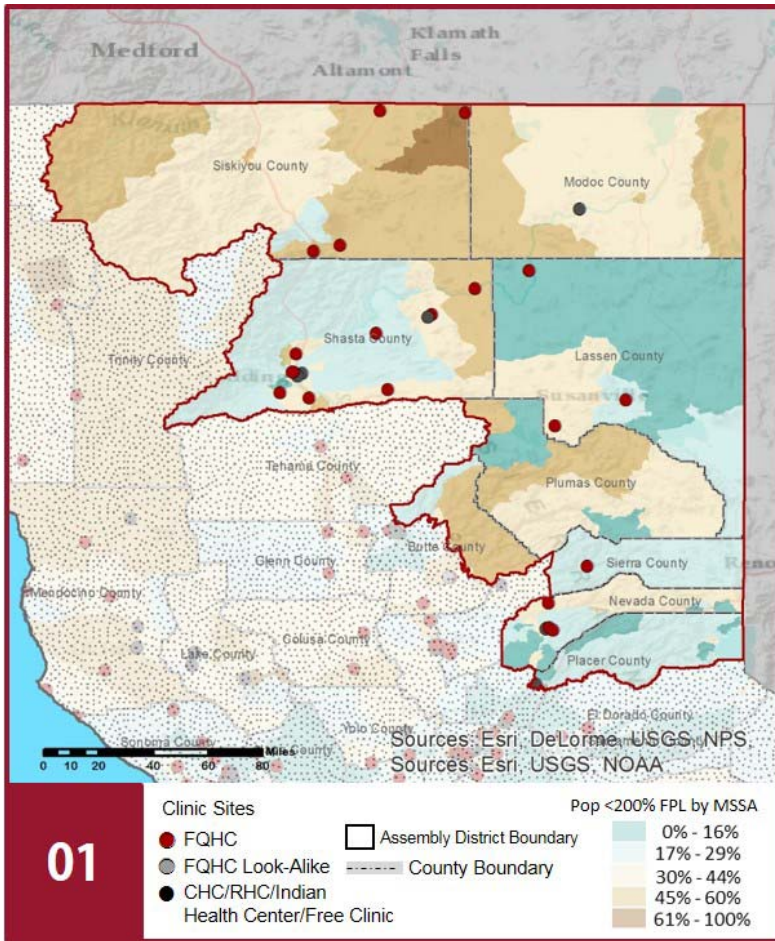
CALIFORNIA COMMUNITY HEALTH CENTERS

2018 | Assembly District 1 Assemblymember Brian Dahle



The Clinics

Community Clinics and Health Centers (CCHCs) are nonprofit health care practices located in low income and medically underserved areas. CCHCs share a common mission to serve everyone who walks through their doors, regardless of their ability to pay. The term CCHC include Federally Qualified Health Centers (FQHC), FQHC Look-Alikes, Migrant Health Centers, Rural and Frontier Health Centers, and Free Clinics. CCHCs are an essential segment of the safety net. In many California Counties, they provide a significant proportion of comprehensive primary care services to those who are publicly subsidized or uninsured.



Clinic Types

Total Number of CCHCs	29
Federally Qualified Health Center sites	22
Federally Qualified Health Center Look-Alike sites	0
95-210 Rural Health Center sites	2

The Patients Demographics

Patients	121,534	
Female	68,766	57%
Male	52,768	43%
19 Years & Under	38,251	31%
Encounters	437,188	

Poverty Levels

Under 100%	54,570	45%
100-138%	13,725	11%
139-200%	12,804	11%
201-400%	6,973	6%
Above 400%	4,771	4%
Unknown	28,691	24%

Race

White (including Hispanic)	98,549	81%
Black	1,963	2%
Native American	7,454	6%
Asian/ Pacific Islander	3,001	2%
More Than One Race	2,394	2%
Other/ Unknown	8,173	7%

Ethnicity

Hispanic	14,218	12%
Non-Hispanic	102,490	84%
Unknown	4,826	4%

Age

Less than 1 Year	3,371	3%
1 - 4 Years	8,285	7%
5 - 12 Years	14,450	12%
13 - 14 Years	3,288	3%
15 - 19 Years	8,857	7%
20 - 34 Years	24,752	20%
35 - 44 Years	12,892	11%
45 - 64 Years	31,199	26%
Over 65 Years	14,440	12%

Migratory Workers

Patients	2,588	2%
Encounters	5,478	1%

Language

Primary Language Not English	4%
------------------------------	----

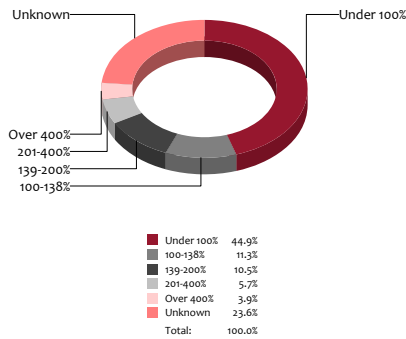
CALIFORNIA COMMUNITY HEALTH CENTERS

2018 | Assembly District 1 Assemblymember Brian Dahle



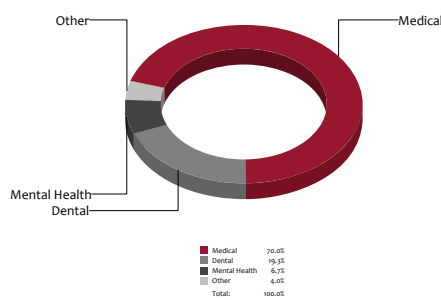
Poverty Level

Patients



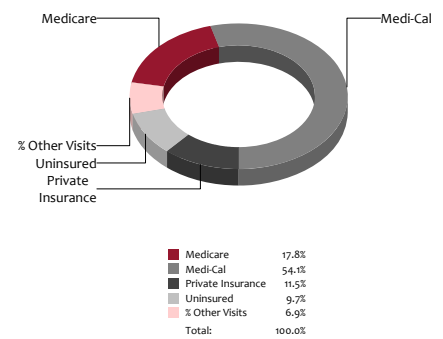
Services

Visits



Payment Source

Visits



The Services

	Provider FTEs		Encounters	
Medical*	117.9	62%	306,021	70%
Dental*	36.4	19%	84,185	19%
Mental Health ***	27.6	15%	29,442	7%
Other***	7.0	4%	17,540	4%
Total	189		437,188	

Health Centers providing other significant services

Vision Services	3	10%
Basic Lab Services	11	38%
Radiology Services	1	3%
Pharmacy Services	4	14%
Urgent Care Services	8	28%
Substance Abuse Services	15	52%
Womens Health Services	22	76%

*Physicians, physician assistants, family nurse practitioners, certified nurse midwives, visiting nurses. **Dentists and Registered Dental Hygienists
Psychiatrists, clinical psychologists, and licensed clinical social workers. *Other providers billable to Medi-Cal

Revenue and Utilization by Payment Source

Program	Patients ^ ^		Encounters		Revenue	
	Count	%	Count	%	Count	%
Medicare	17,810	15%	77,909	18%	Gross Patient Revenue	\$110,461,897
Medi-Cal	63,889	53%	236,509	54%	Net Patient Revenue	\$76,485,163
Private Insurance	17,195	14%	50,186	11%	Other Operating Revenue	
Uninsured Services ^ ^ ^ ^	19,884	16%	42,404	10%	Federal	\$26,230,046
All County ^ ^ ^	1	0%	19	0%	State	\$1,557,953
Covered California	1,546	1%	3,370	1%	County/Local	\$1,124,319
PACE Patients	0	0%	0	0%	Private	\$965,541
Other	1,209	1%	2,929	1%	Donations/Contributions	\$746,490
BCCCP ^ ^	200	0%	518	0%	Other	\$16,123,904
CHDP ^ ^	6,850	6%	16,495	4%	Total Operating Revenue	
Family PACT ^ ^	4,091	3%	6,849	2%	\$ 123,233,416	

^ ^ Patient counts for Episodic programs (BCCP, CHDP, Family PACT) are duplicated. BCCCP = Breast and Cervical Cancer Control Program; CHDP = Child Health and Disability Prevention Program;
Family PACT = Family Planning Access Care and Treatment program.
^ ^ ^ County Indigent/CMSP/MISP, San Diego County Medical Plan, LA County Public/Private Partnership, and Other County Programs.
^ ^ ^ ^ Free and Self-Pay/ Sliding Fee Programs.

Because of their philosophy and by necessity, CCHCs have been vigilant about controlling the cost of care, and the untoward effects of deferred or neglected care, by promoting a broad range of preventive health services specifically targeted to the particular needs of their communities and patient populations. The federal Office of Management and Budget has found the Health Center Program to be one of the ten most effective federal programs and the most effective program under the federal Health and Human Services Agency. Despite enormous challenges, CCHCs have persisted in their mission to serve their local communities.

All information compiled by Jeanita Harris, Sr. Data Analyst, CPCA. Numbers are based on 2016 OSHPD data.